

# Workplace by Numbers

*Rates, thresholds and limits applicable from 1 July 2025*



**Superannuation  
guarantee**  
**12%**



**High income threshold /  
Contractor high income threshold**  
**\$183,100**



**Unfair dismissal  
compensation limit**  
**\$91,550**



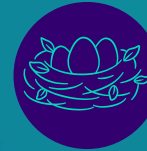
**Modern Award  
minimum wage raise  
increase by 3.5%**



**National Minimum Wage**  
**\$948 per (38 hour) week**  
**\$24.95 per hour**



**Tax-free limit for genuine  
redundancy payments**  
**\$13,100 base limit**  
**\$6,552 for each completed  
year of service**



**Maximum superannuation  
contribution base**  
**\$62,500 per quarter**